

TOWNHOUSE

URMSTON



Say hello Urmston.

1 & 2 bedroom
stylish new homes
from £56,000*

Located in up-and-coming Urmston, Trafford, these Shared Ownership apartments are new builds... but with a twist. Developed with our usual eye for detail and commitment to quality, homes at The Townhouse are also part regeneration project. So along with all the brand new fixtures and fittings, and you'll get bundles of character to boot.

Be quick.

geckohomes.co.uk

*Price based on 35% Shared Ownership and a 95% LTV mortgage. Properties are bought as leasehold. Full terms and conditions apply, for more information speak to our team.

TOWNHOUSE
URMSTON

where you'll want to live. **GECKO™**

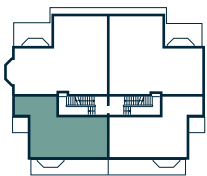
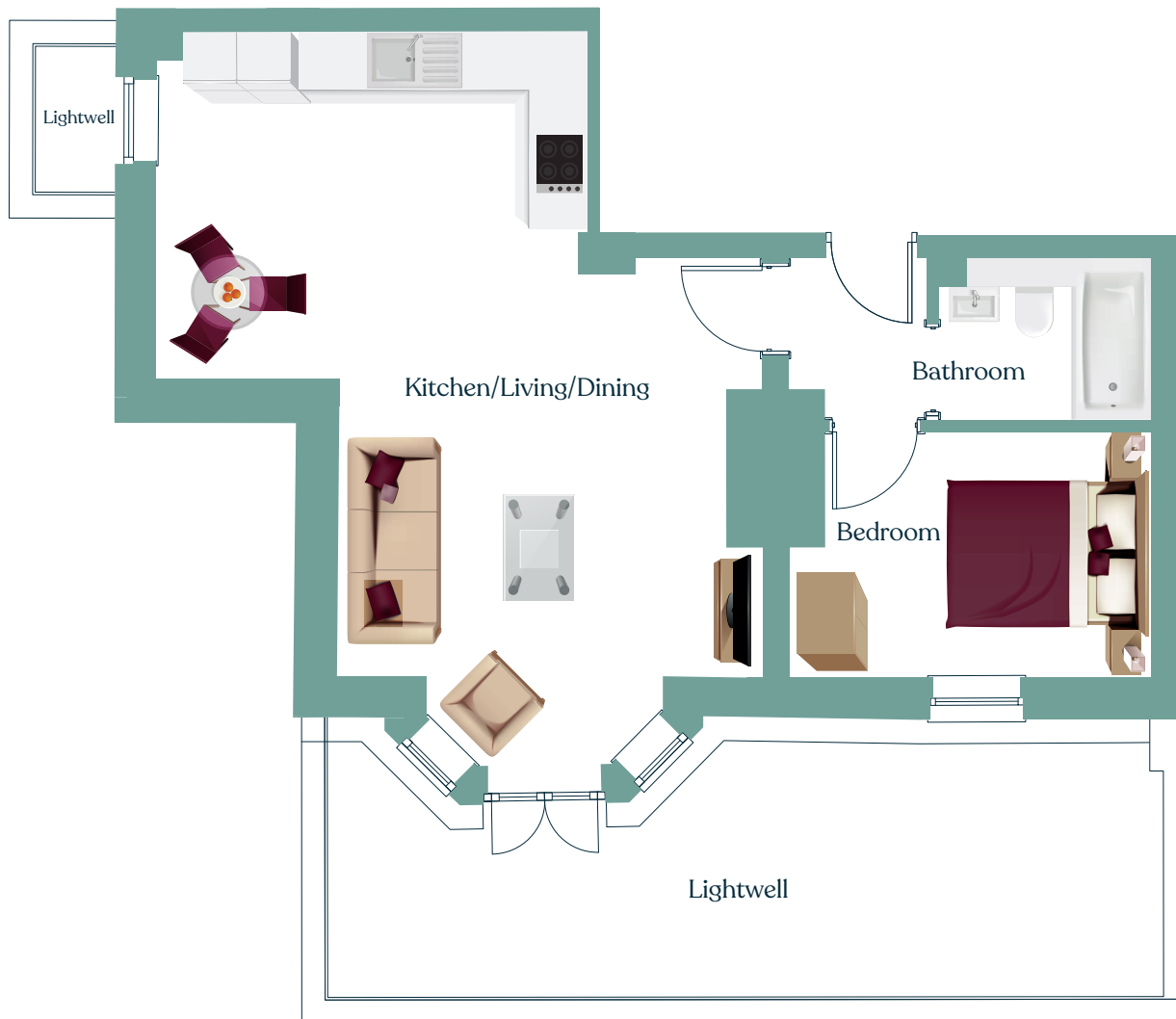
The Townhouse

Development Plan



1 Bedroom Apartment

Apartment 1



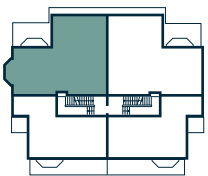
Lower Ground Floor

Kitchen/Dining/Living	29.85m ²
Bedroom	8.16m ²
Bathroom	3.36m ²

Total 46m²

2 Bedroom Apartment

Apartment 2



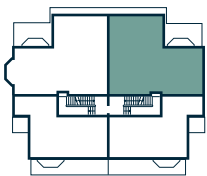
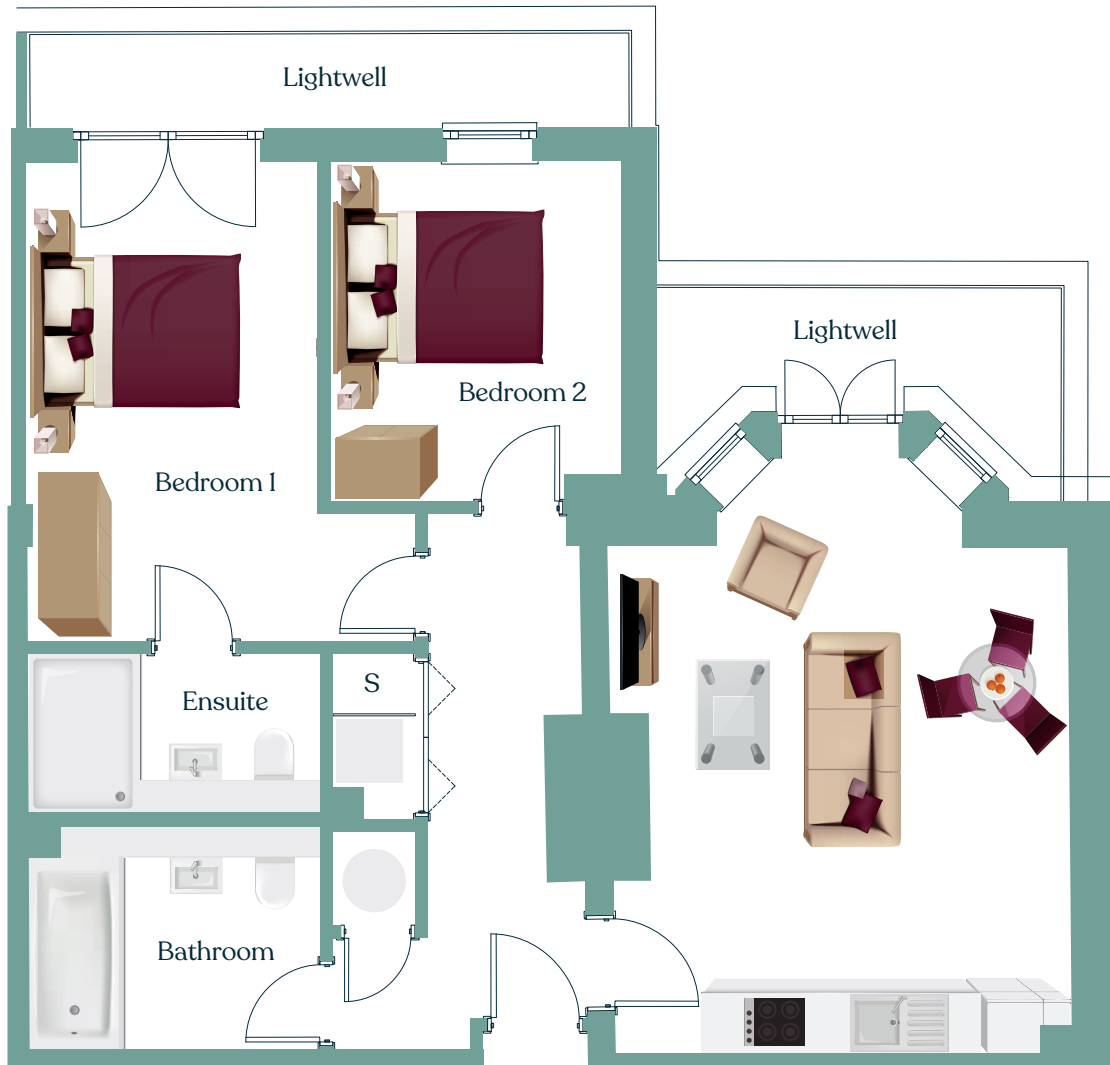
Lower Ground Floor

Kitchen/Dining/Living	23.69m ²
Bedroom 1	13.42m ²
Ensuite	4.06m ²
Bedroom 2	8.80m ²
Bathroom	5.81m ²

Total 69m²

2 Bedroom Apartment

Apartment 3



Lower Ground Floor

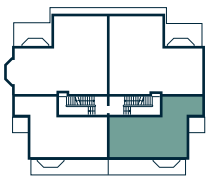
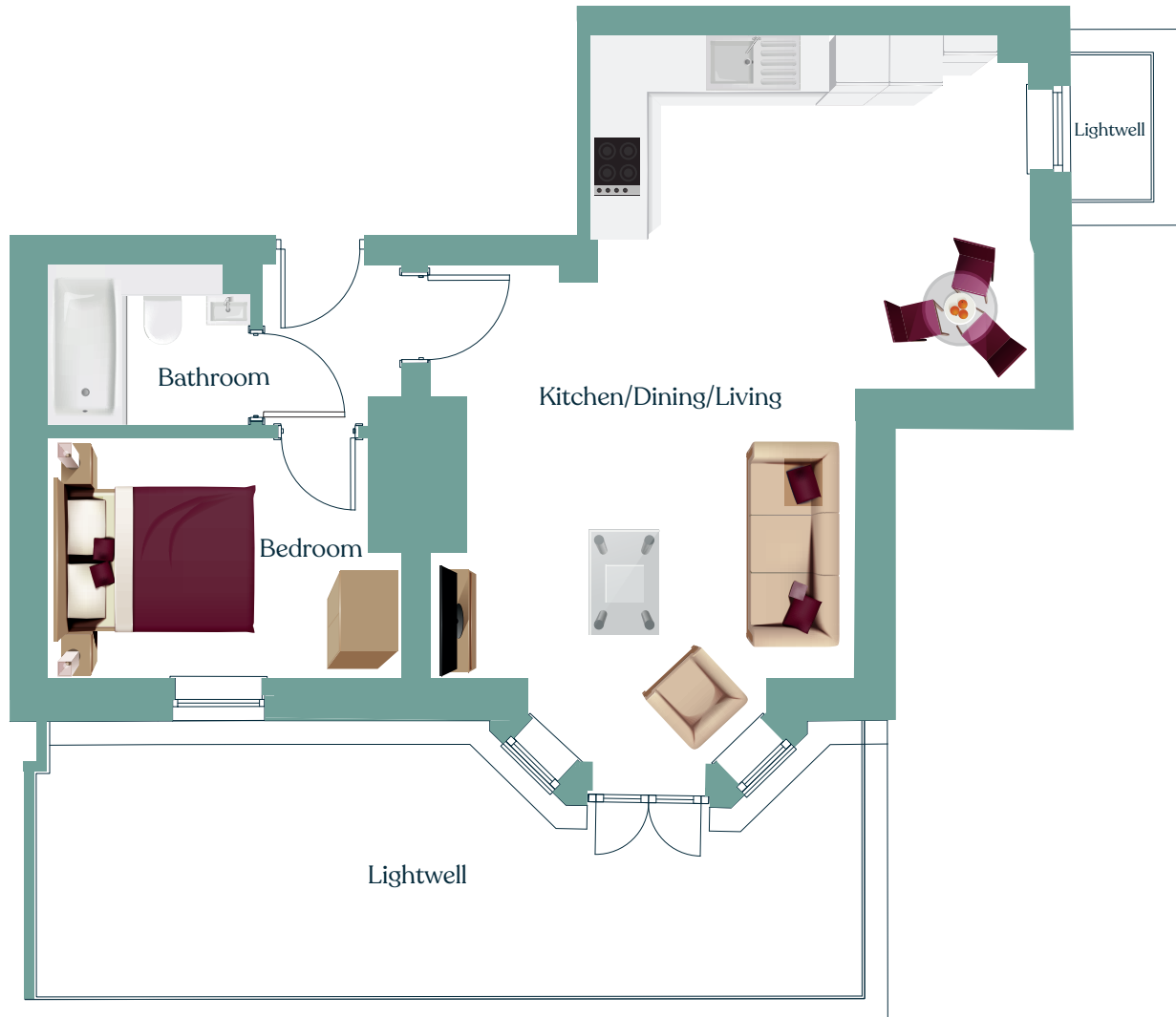
Kitchen/Dining/Living	21.82m ²
Bedroom 1	13.50m ²
Ensuite	4.07m ²
Bedroom 2	8.68m ²
Bathroom	5.83m ²

Total 67m²

S > Store

1 Bedroom Apartment

Apartment 4



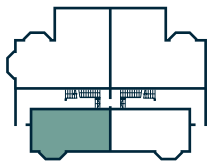
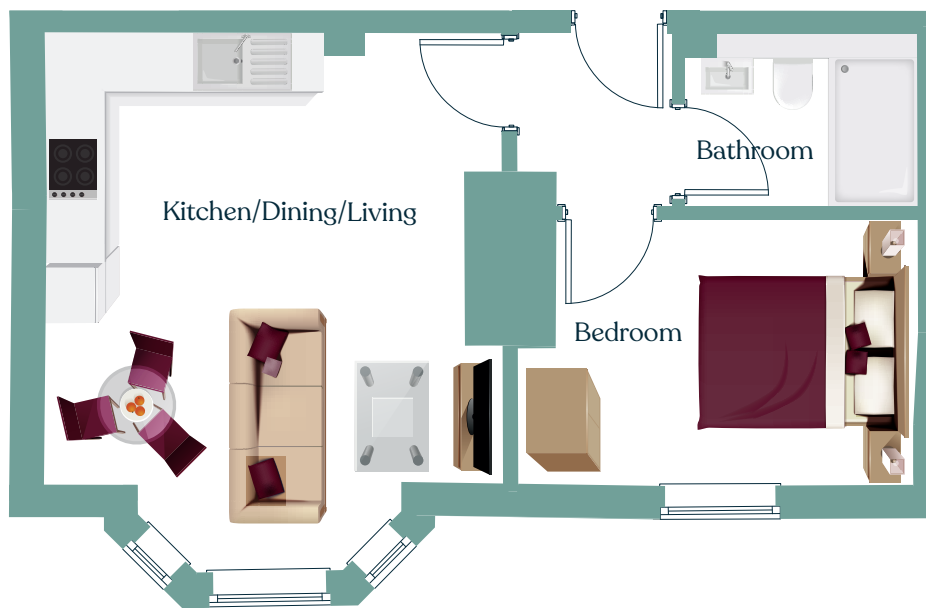
Lower Ground Floor

Kitchen/Dining/Living	30.52m ²
Bedroom	8m ²
Bathroom	3.29m ²

Total 46m²

1 Bedroom Apartment

Apartment 5



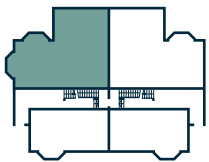
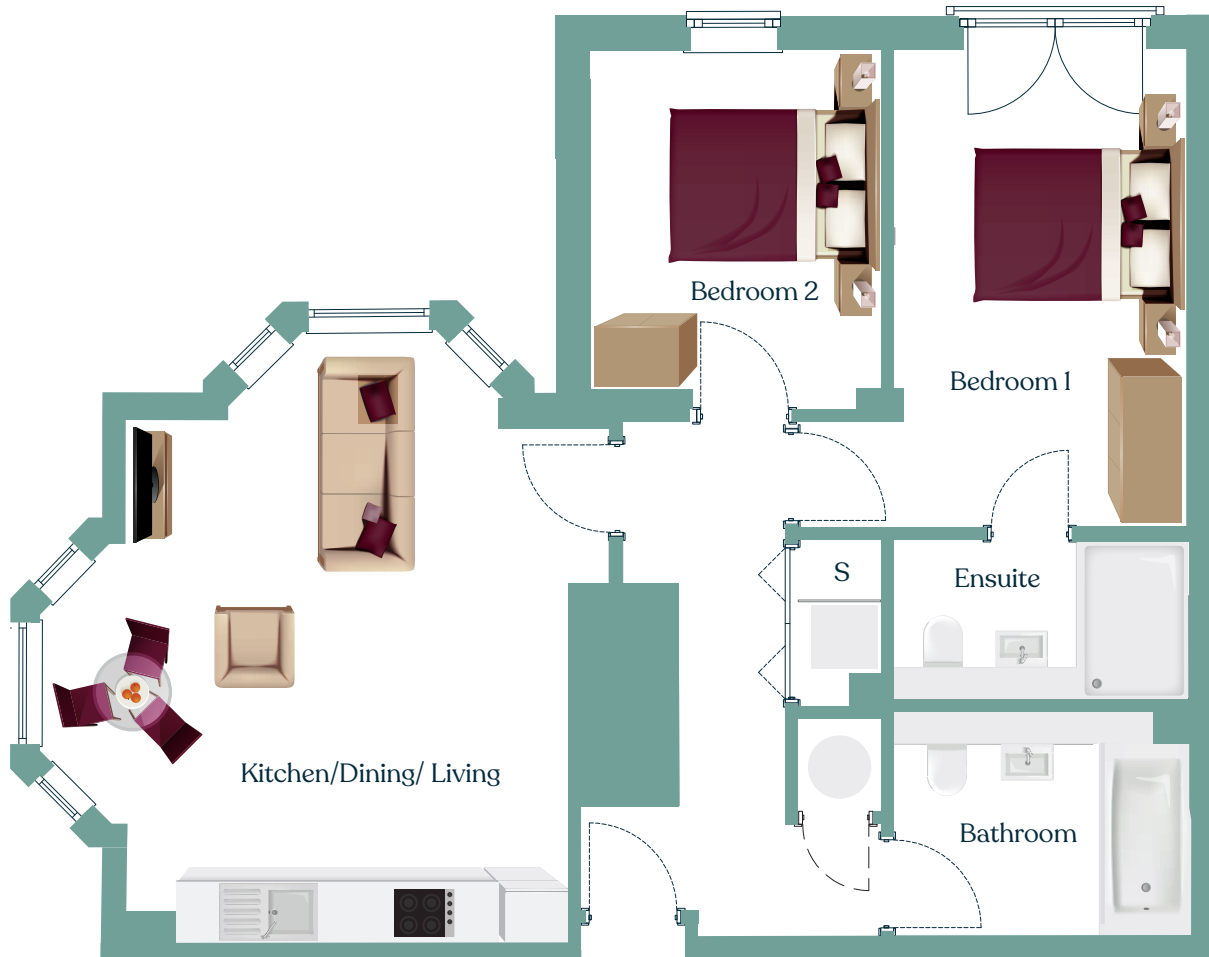
Ground Floor

Kitchen/Dining/Living	19.85m ²
Bedroom	8.96m ²
Bathroom	3.75m ²

Total 37m²

2 Bedroom Apartment

Apartment 6



Ground Floor

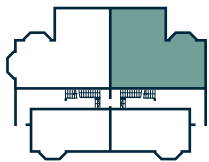
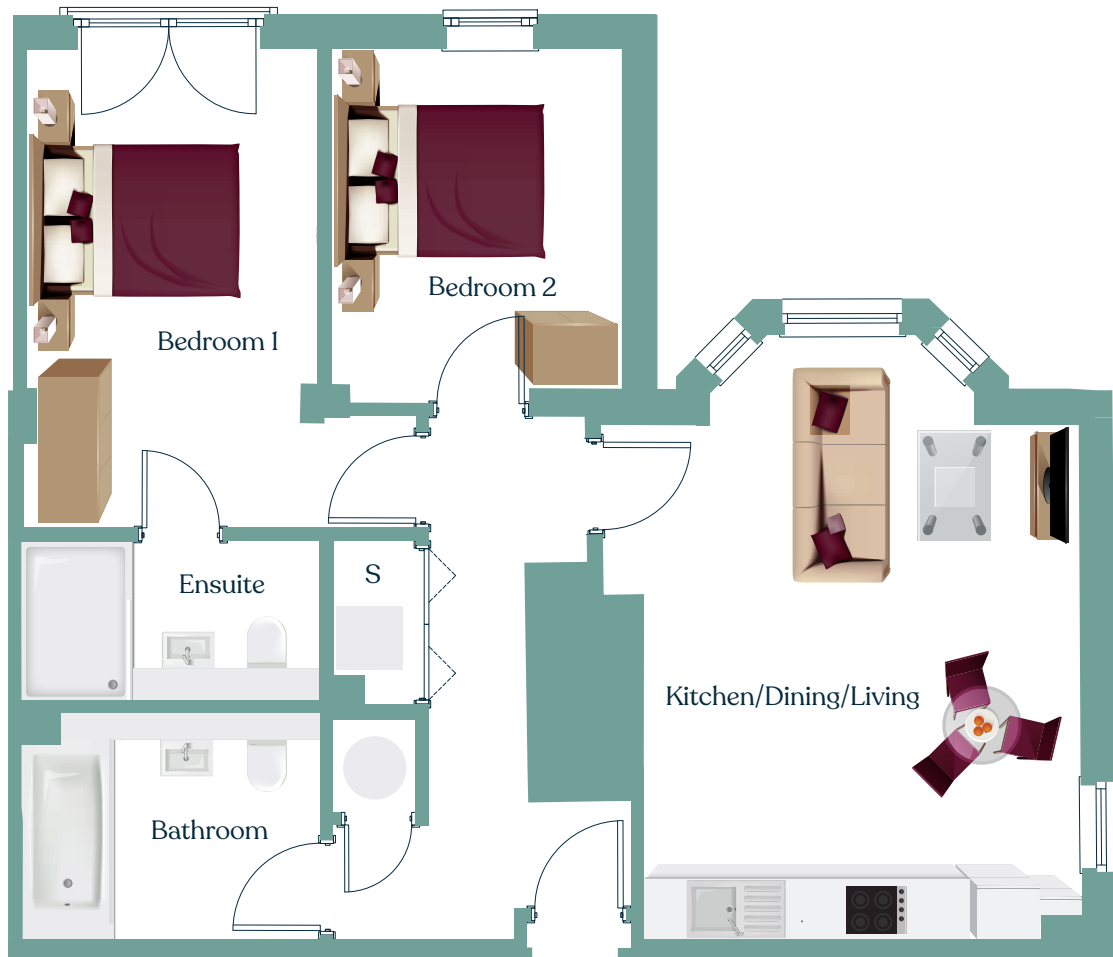
Kitchen/Dining/Living	3.67m ²
Bedroom 1	13.33m ²
Ensuite	4.19m ²
Bedroom 2	9.09m ²
Bathroom	6.17m ²

Total 71m²

S > Store

2 Bedroom Apartment

Apartment 7



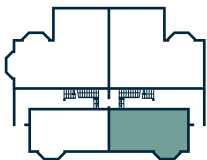
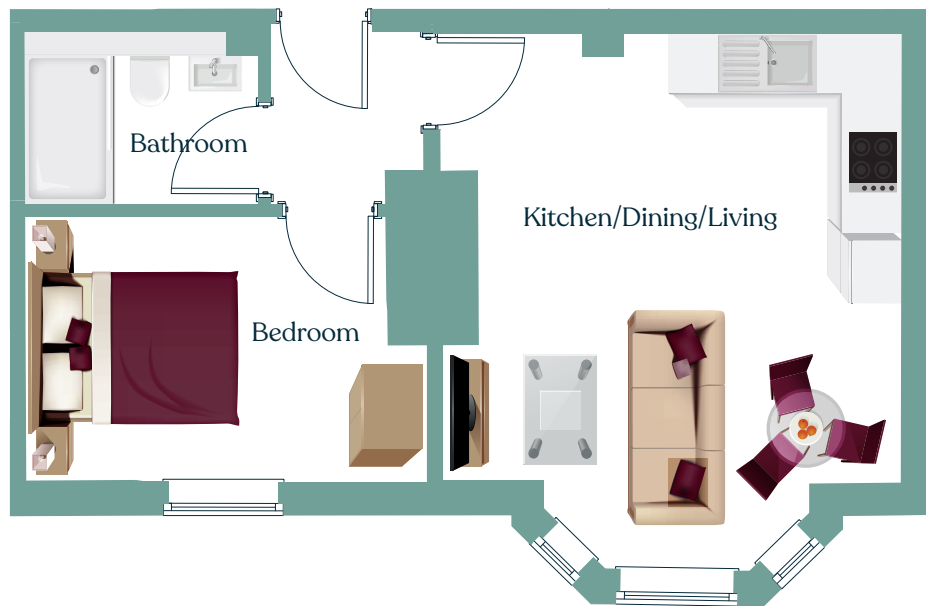
Ground Floor

Kitchen/Dining/Living	22.82m ²
Bedroom 1	13.25m ²
Ensuite	4.23m ²
Bedroom 2	9.04m ²
Bathroom	6.24m ²

Total 69m²

1 Bedroom Apartment

Apartment 8



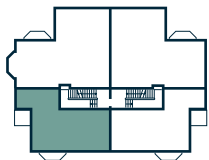
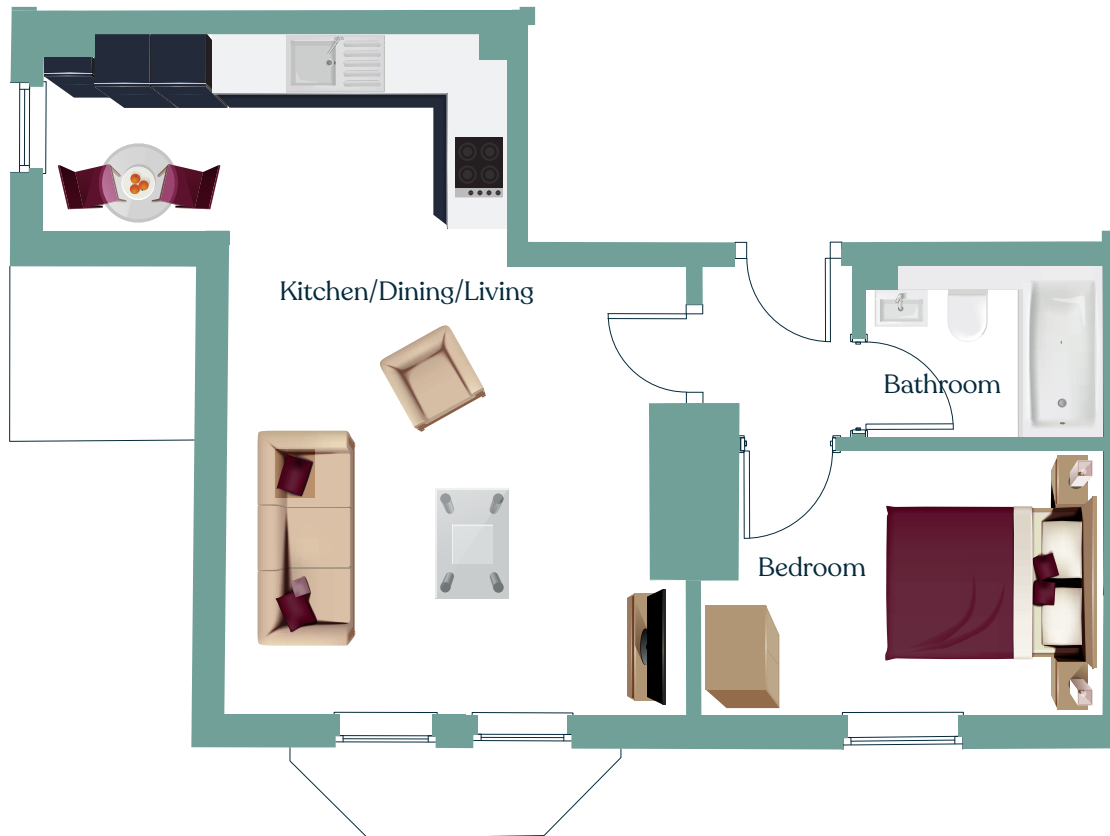
Ground Floor

Kitchen/Dining/Living	19.91m ²
Bedroom	9m ²
Bathroom	3.75m ²

Total 37m²

1 Bedroom Apartment

Apartment 9



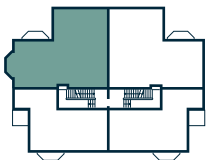
First Floor

Kitchen/Dining/Living	27.50m ²
Bedroom	9.04m ²
Bathroom	3.82m ²

Total 44m²

2 Bedroom Apartment

Apartment 10



First Floor

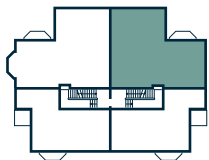
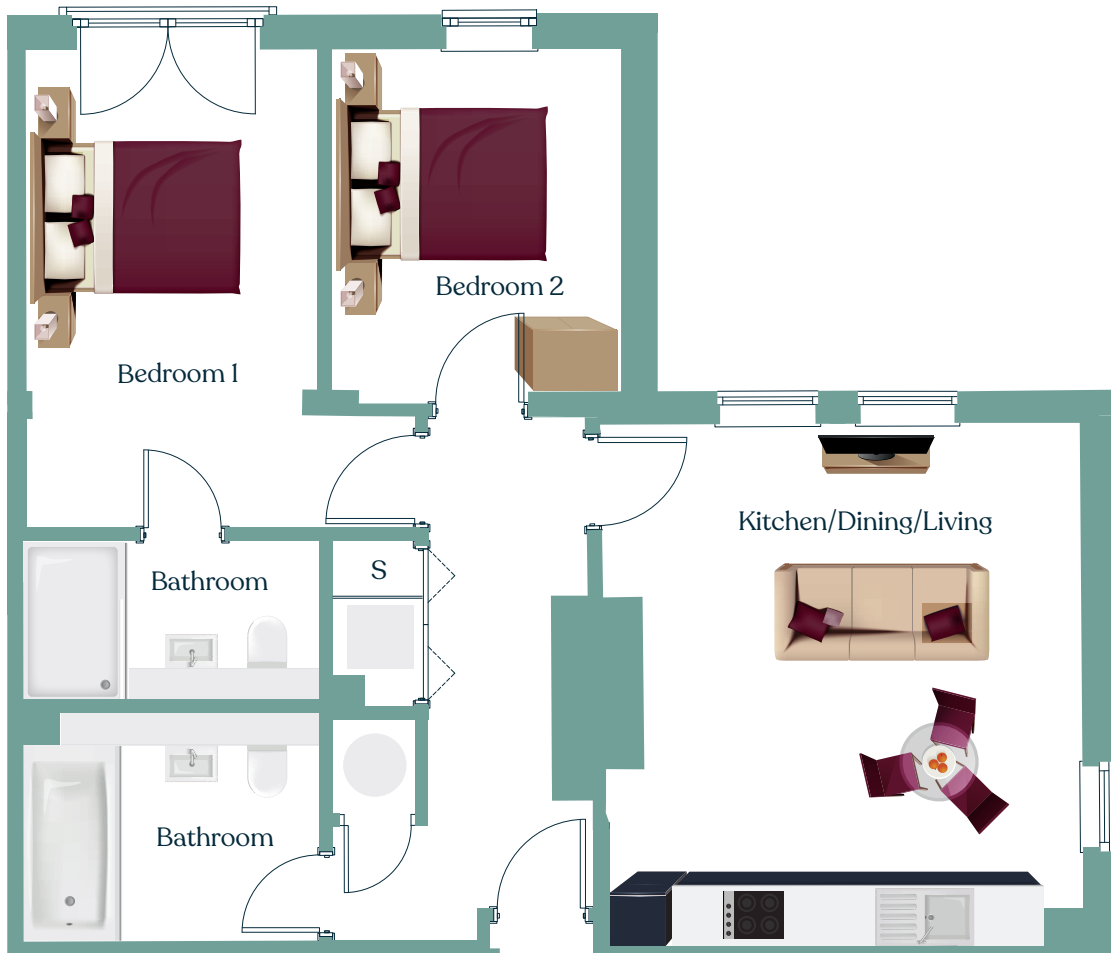
Kitchen/Dining/Living	23.54m ²
Bedroom 1	13.36m ²
Ensuite	4.21m ²
Bedroom 2	9.02m ²
Bathroom	6.28m ²

Total 70m²

S > Store

2 Bedroom Apartment

Apartment 11

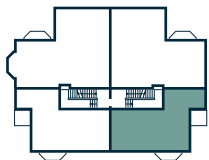
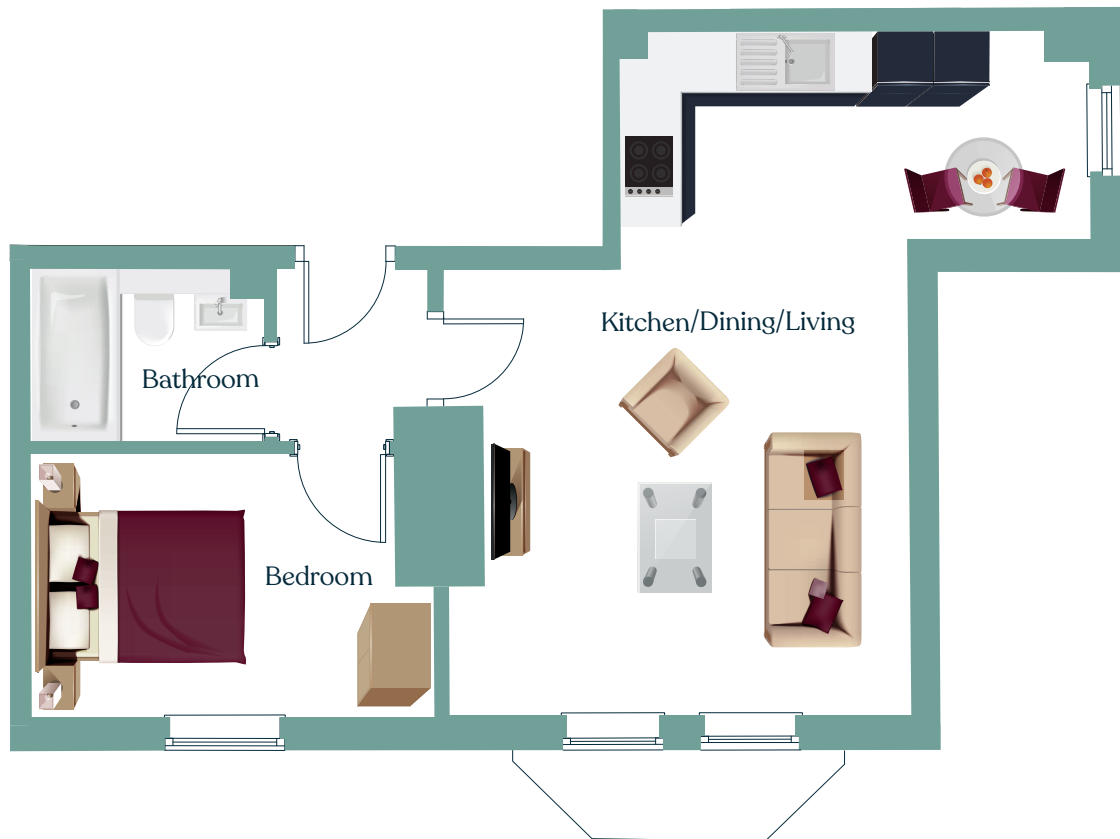


First Floor

Kitchen/Dining/Living	21.66m ²
Bedroom 1	13.35m ²
Ensuite	4.20m ²
Bedroom 2	9.07m ²
Bathroom	6.25m ²
	68m ²

1 Bedroom Apartment

Apartment 12

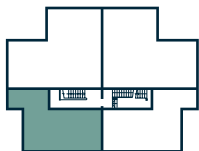


First Floor

Kitchen/Dining/Living	27.91m ²
Bedroom	9m ²
Bathroom	3.77m ²
	44m ²

1 Bedroom Apartment

Apartment 13

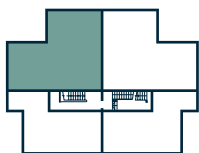


Second Floor

Kitchen/Dining/Living	25.77m ²
Bedroom	8.53m ²
Bathroom	3.65m ²
	42m ²

2 Bedroom Apartment

Apartment 14



Second Floor

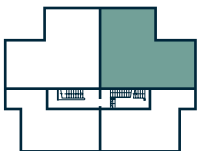
Kitchen/Dining/Living	20.45m ²
Bedroom 1	13.22m ²
Ensuite	4.21m ²
Bedroom 2	9m ²
Bathroom	6.09m ²

Total 67m²

S > Store

2 Bedroom Apartment

Apartment 15



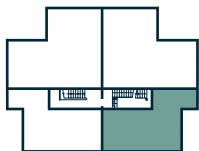
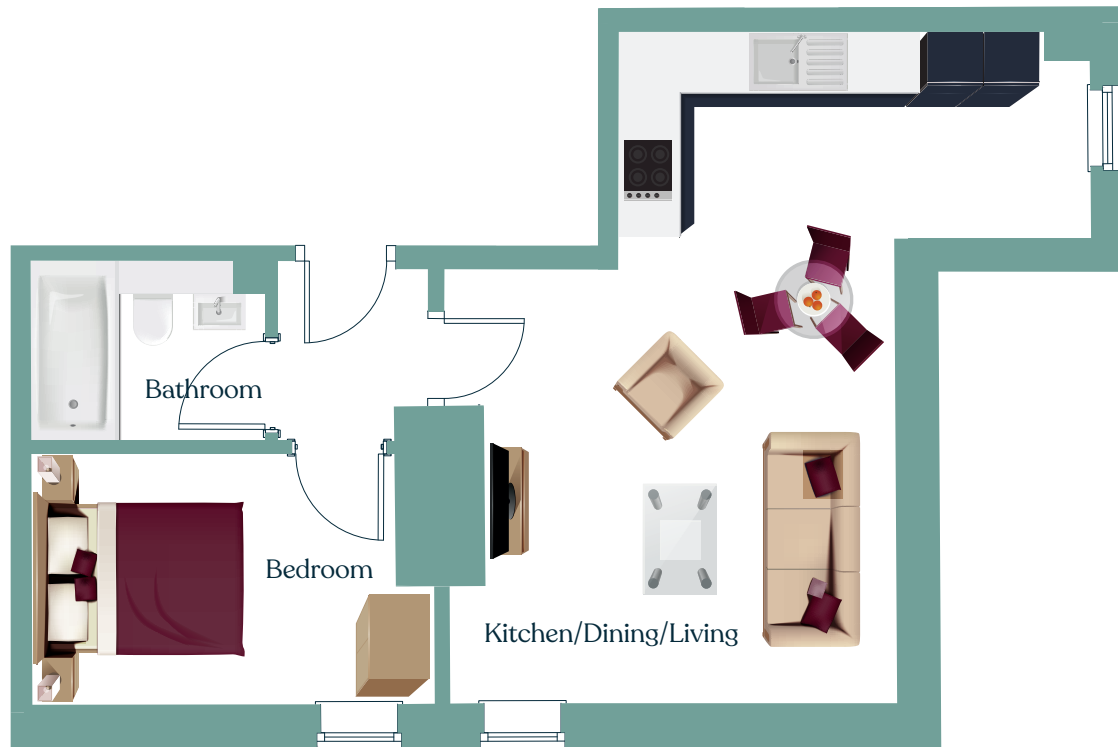
Second Floor

Kitchen/Dining/Living	20.44m ²
Bedroom 1	13.26m ²
Ensuite	4.20m ²
Bedroom 2	9.02m ²
Bathroom	6.01m ²

Total 67m²

1 Bedroom Apartment

Apartment 16



Second Floor

Kitchen/Dining/Living	26.29m ²
Bedroom	8.53m ²
Bathroom	3.60m ²

Total 43m²

Specification

Kitchen and Living Area

- Fully-fitted kitchen – Greenwich range by Howdens
- Integrated electric fan assisted oven
- Integrated fridge freezer
- Glass splashback to the cooker
- LED downlights
- Carpets included in bedrooms (no flooring included in the kitchen, dining and living area)

Bathroom

- Tiled bathroom floor
- Tiled bathroom walls surrounding bath and shower
- Heated towel rail
- LED downlights

External

- Landscaped gardens with communal patio and seating area
- Allocated car parking (except Apt 5, Apt 8 & Apt 13).
- Bicycle Store

Electrical

- Extractor fans in kitchen, bathroom, and en-suite
- TV points to living space.
- Mains-operated smoke detectors with battery back-up

Visit:
www.geckohomes.co.uk

Email:
customercare@geckohomes.co.uk

Call:
0161 974 0556

GECKOTM